



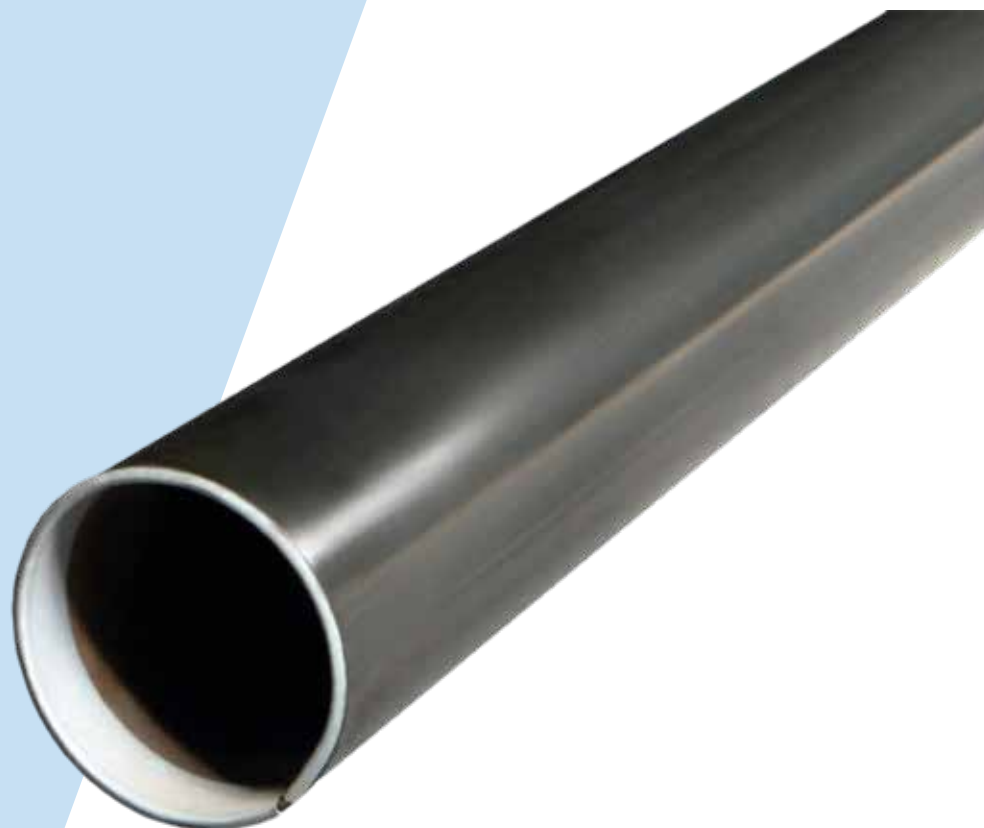
TUBERÍA DE DIÁMETROS MAYORES

DESCRIPCIÓN

Tubería con soldadura longitudinal en diámetros mayores, a través del mas amplio inventario con una excelente calidad, servicio y tiempo de entrega

CARACTERÍSTICAS

- En diámetros desde 150 a 1219 mm (6" a 48")
- Bajo estándares ASTM-A-500 grados A, A53 grado A y B , API 5L grados X42 y X52.



USOS

- Conduccion de fluidos (agua, gas, aire e hidrocarburos) en proyectos a gran escala.
- Proyectos estructurales.

INFORMACIÓN TÉCNICA

| ESPESOR | | kg/m | | | | | | | | | | | | | |
|------------------|----|-------------------|--------|-------|-------|-------|--------|--------|--------|-------|-------|--------|-------|--|--|
| | | mm | in | 4.8 | 5.2 | 5.6 | 6.4 | 7.1 | 7.9 | 8.2 | 8.4 | 8.7 | 9.3 | | |
| DIÁMETRO NOMINAL | | DIÁMETRO EXTERIOR | | kg/m | | | | | | | | | | | |
| mm | in | mm | in | | | | | | | | | | | | |
| 203 | 8 | 219.1 | 8.625 | 25.26 | 27.22 | 29.28 | 33.31 | | 41.24 | 42.55 | | 45.34 | | | |
| 254 | 10 | 273.1 | 10.750 | 31.62 | 34.08 | 36.67 | 41.75 | | | | | 56.96 | 60.29 | | |
| 305 | 12 | 323.9 | 12.750 | 37.62 | 40.55 | 43.63 | 49.71 | 55.75 | 61.69 | | 65.18 | 67.90 | | | |
| 356 | 14 | 355.6 | 14.000 | 41.35 | | 47.99 | 54.69 | 61.35 | 67.90 | | | 74.76 | | | |
| 406 | 16 | 406.4 | 16.000 | 47.34 | 51.06 | 54.96 | 62.84 | 70.30 | 77.83 | | | 85.71 | | | |
| 457 | 18 | 457.2 | 18.000 | | | | 70.60 | 79.24 | 87.75 | | | 96.66 | | | |
| 508 | 20 | 508.0 | 20.000 | | | | 78.55 | 88.19 | 97.67 | | | 107.60 | | | |
| 610 | 24 | 609.6 | 24.000 | | | | 94.46 | 106.08 | 117.51 | | | 129.50 | | | |
| 762 | 30 | 762.0 | 30.000 | | | | 118.33 | 132.91 | 147.28 | | | 173.34 | | | |
| 914 | 36 | 914.4 | 36.000 | | | | 142.13 | 159.97 | 176.96 | | | 195.11 | | | |
| 1219 | 48 | 1219.2 | 48.000 | | | | | | | | | 260.85 | | | |

| ESPESOR | | kg/m | | | | | | | | | | | | | |
|------------------|----|-------------------|--------|--------|--------|--------|--------|--------|--------|--------|--------|--------|--------|--------|--|
| | | mm | in | 9.5 | 10.3 | 11.1 | 11.9 | 12.7 | 14.3 | 15.9 | 17.5 | 19.1 | 20.6 | 22.2 | |
| DIÁMETRO NOMINAL | | DIÁMETRO EXTERIOR | | kg/m | | | | | | | | | | | |
| mm | in | mm | in | | | | | | | | | | | | |
| 150 | 6 | 168.3 | 6.625 | 37.28 | | | | | | | | | | | |
| 203 | 8 | 219.1 | 8.625 | 49.20 | | | | | | | | | | | |
| 254 | 10 | 273.1 | 10.750 | | 71.87 | | | | | | | | | | |
| 305 | 12 | 323.9 | 12.750 | 73.78 | 79.70 | 85.82 | | | | | | | | | |
| 356 | 14 | 355.6 | 14.000 | 81.25 | 87.79 | 94.55 | 100.94 | | | | | | | | |
| 406 | 16 | 406.4 | 16.000 | 93.27 | 100.70 | 108.49 | 115.86 | 123.30 | | | | | | | |
| 457 | 18 | 457.2 | 18.000 | 105.10 | 113.62 | 122.43 | 130.78 | 139.20 | 155.87 | | | | | | |
| 508 | 20 | 508.0 | 20.000 | 117.02 | 126.53 | 136.37 | 145.70 | 155.12 | | | | | | | |
| 610 | 24 | 609.6 | 24.000 | 140.88 | 152.37 | 164.26 | 175.54 | 186.94 | 209.50 | 232.66 | 255.24 | | | | |
| 762 | 30 | 762.0 | 30.000 | 176.84 | 191.11 | 206.09 | 220.30 | 234.67 | 263.12 | 292.18 | 320.93 | 349.02 | 376.98 | 405.54 | |
| 914 | 36 | 914.4 | 36.000 | 212.59 | 229.76 | 247.31 | 264.94 | 282.27 | 316.11 | 351.70 | 386.45 | 420.42 | 454.27 | 488.86 | |
| 1219 | 48 | 1219.2 | 48.000 | 284.24 | 307.30 | 331.52 | 354.52 | 377.79 | 423.94 | 471.14 | 517.92 | 563.70 | 609.36 | 656.06 | |

CED.10 CED.20 CED.30 CED.40 ESTÁNDAR